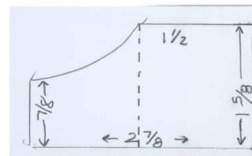


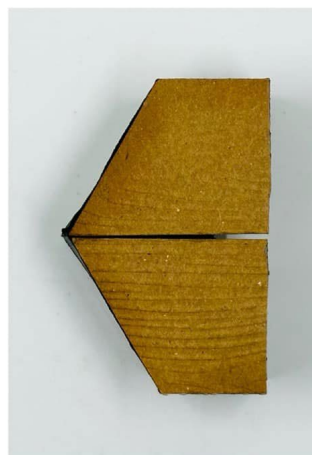
John Watterson's Ship using Karen Burniston's Cake Pop-Up die set

This is how I build the base of the ship.

- 1) First thing to do is cut four bottom tier cake pieces, fold them as per Karen's video. Then turn them over. Next cut a $\frac{3}{4}$ " strip 5.5 inches long. You'll sandwich this between the four cake pieces. This stabilizes the boat. You can cut the middle tabs off but leave the ones on the end. Also make sure that one of the end pieces has a tab and the other does not. Adhere the sides together so it's straight and then the ends. Next cut two $1\frac{1}{4}$ " strips $5\frac{5}{8}$ " long. Adhere this to the top of base. Trim to fit.
- 2) Cut a $1\frac{5}{8}$ " X 6" strip and fold it in half. Place template on strip ($1\frac{5}{8}$ " end against the fold line) and cut out the shape. Do not cut the fold line. This gives you the two ends of a pirate ship. You should have two ends that look like the black piece.
- 3) Die cut two more halves of the bottom cake tier and cut a $\frac{3}{4}$ " X $2\frac{3}{4}$ " strip of card stock. Sandwich this strip between the two halves forming the bottom cake layer. Collapse the cake layer and cut it $1\frac{1}{2}$ " from the pointed ends. Adhere these pieces to the platform of the ship only.



PIC-COLLAGE



Source: Facebook post in Karen Burniston Pop-Up Peeps June 13, 2024

John Watterson
June 8 at 7:49 AM · 🌐

This has been a project that I have been mulling over for several years. I just never had the time to make it till now. This is a large card. A full letter size card to be exact. So, 5.5" X 8.5 finished size card. Although, without the sails it could be done in a 5 X 7 base. I used three KB 1029 Cake Pop-Up bases. I combined the Tiny Tree bases (1156) with the Street Lantern Pop-Up (1171) to create the mast. The railings are from the fence in Farm Edges set (1097). The wheel to pilot the ship is from (1119) Cruise Charms set and waves are from (1038) Tropical Scene. Also used (1164) Happy Father's Day, (1036) Mermaid, (1225) Hexagons, and (1230) Beach Borders. Can't wait to make Noah's Ark or even a tug boat. from this. combination.



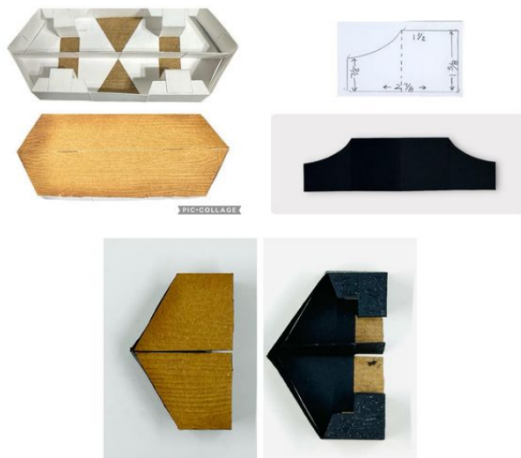
CREATED BY
John R. Watterson

John Watterson
June 13 at 9:54 AM · 🌐

This is how I build the build the base of the ship. First thing to do is cut four bottom tier cake pieces, fold them as per Karen's video. Then turn them over. Next cut a 3/4" strip 5.5 inches long. You'll sandwich this between the four cake pieces. This stabilizes the boat. You can cut the middle tabs off, but leave the ones on the end. Also make sure that one of the end pieces has a tab and the other does not. Adhere the sides together so it's strait and then the ends. Next cut two 1 1/4" strips 5 3/4" long. Adhere this to the top of base. Trim to fit.

2) cut a 1 3/4" X 6" strip and fold it in half. Place template on strip (1 5/8" end against the fold line)and cut out the shape. Do not cut the fold line. This gives you the two ends of a pirate ship. You should have two ends that look like the black piece.

3) Die cut two more halves of the bottom cake tier and cut a 3/4" X 2 3/4" strip of card stock. Sandwich this strip between the two halves forming the bottom cake layer. Collapse the cake layer and cut it 1 1/2" from the pointed ends. Adhere these pieces to the platform of the ship only.



John Watterson
June 11 at 9:52 AM · 🌐

I did make a pirate from a gingerbread man (1245) and (1265) Easter basket and put him up in the crow's nest, but in the end I decided not to use it. Also, toyed with using the platform riser to double the sails, but it didn't work out for me, but I may revisit it.



John Watterson
June 12 at 8:46 PM · 🌐

Anyone up for a cruise? Made using 1029 Cake Pop-up. I'll include more after I get the front of the card photographed.



John Watterson
4d · 🌐

The next boat I'm working on is a fishing boat. It gives me a chuckle to thinking about two raccoons in a boat fishing for their next meal as they spot a giant bull frog. I used the second tier of the cake pop-up and turned it upside down. (KB 1029) I'll finish the card up after the wedding Saturday and show you. Also used were 1001 Woodland Animals and 1049 Camping Charms.

